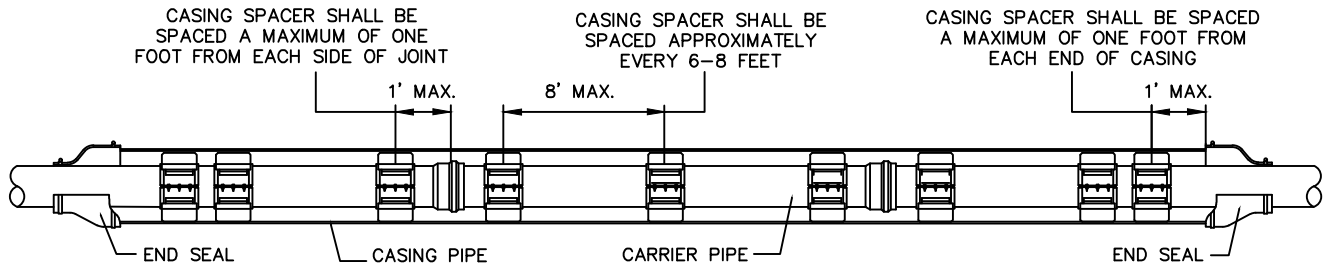
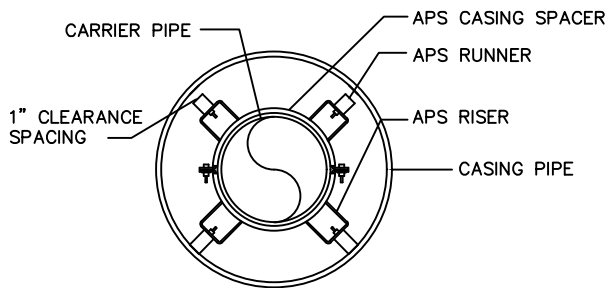


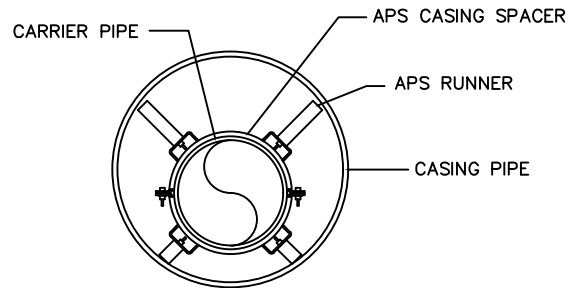
TYPICAL SEWER LINE CASING SPACER CONFIGURATION



TYPICAL WATER LINE CASING SPACER CONFIGURATION



TYPICAL WATER LINE END VIEW



TYPICAL SEWER LINE END VIEW

### ENCASEMENT DETAILS

N.T.S.  
S-31 NOTES:

#### ENCASEMENT/CARRIER PIPE SIZING CHART

WATER MAINS SHALL BE SPECIAL CLASS 50 D.I.P. OR C900 DR-14. SEWER MAINS SHALL BE SPECIAL CLASS 50 D.I.P., EPOXY LINED, OR PVC, SDR-26. FOR GRAVITY, C900 DR 18 FOR SEWER FORCE MAIN

CARRIER NOM. SIZE	CARRIER PIPE O.D.	CARRIER BELL O.D.	CASING NOM. SIZE*
6"	6.90	11.06	12"
8"	9.05	13.31	16"
10"	13.20	15.62	20"
12"	13.20	17.88	20"
14"	15.30	20.25	24"
16"	17.40	22.50	24"
18"	19.50	24.75	30"
20"	21.60	27.00	30"
24"	25.80	31.50	36"

\* ALL ENCASEMENT PIPE SHALL BE NEW AND HAVE A MINIMUM WALL THICKNESS OF 0.25 INCHES.

- SPACERS SHALL BE MODEL SSI OR SSIM AS MANUFACTURED BY ADVANCE PRODUCTS & SYSTEMS (APS) AS SPECIFIED.
- QUANTITY OF RUNNERS SHALL BE IN ACCORDANCE WITH CARRIER PIPE SIZE AS FOLLOWS:
  - TO 14" DIAMETER - 4 RUNNERS
  - 16" TO 36" DIAMETER - 6 RUNNERS
  - 38" TO 48" DIAMETER - 8 RUNNERS
- DIMENSIONS BETWEEN SPACERS SHALL BE AS FOLLOWS:
  - STAINLESS STEEL - 6 TO 8 FEET.
- WIDTH OF SPACERS SHALL BE IN ACCORDANCE WITH CARRIER PIPE SIZE AS FOLLOWS:
  - TO 14" DIAMETER - 8" WIDTH
  - 16" AND LARGER DIAMETER - 12" WIDTH
- A MINIMUM OF THREE SPACERS PER FULL JOINT OF PIPE.
- WATER LINES SHALL BE "CENTERED" IN CASING.
- SEWER LINES SHALL BE HELD TO SPECIFIED SLOPE.
- ALL D.I. CARRIER PIPE MUST HAVE FIELD LOCK GASKETS INSTALLED WITHIN THE CASING PIPE.



526 OAK AVENUE • P.O. BOX 769 • SPRINGDALE, ARKANSAS • 72765-0769 • (479) 751-5751

STANDARD DETAILS  
FOR  
WATER AND SEWER CONSTRUCTION

DRAWN BY:

KMI/JNK

DRAWING NO:

S-31

DATE:

AUGUST 2025